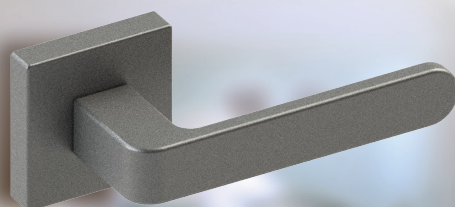
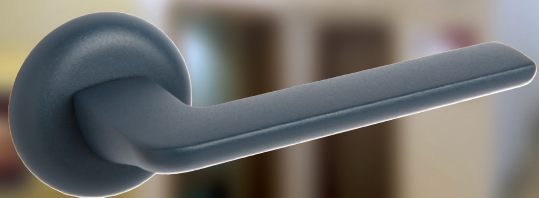


## Lever Handles And Roses



high quality lever handles

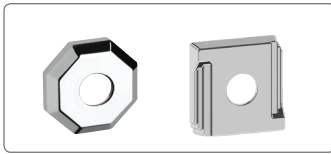


NL802-H .....	LR4	NL-C .....	LR21
NL803-L .....	LR4	NL-H .....	LR21
NL804-K .....	LR5	NL-J .....	LR21
NL805-H .....	LR5	NL-K .....	LR21
NL806-C .....	LR5	NL-L .....	LR21
NL807-P .....	LR6	NL-M .....	LR21
NL808-M .....	LR6	NL-N .....	LR21
NL809-A .....	LR7	NL-P .....	LR21
NL810-N .....	LR7	NL-Q .....	LR21
NL811-Q .....	LR7	NL-S .....	LR21
NL812-M .....	LR8	NL Escutcheon .....	LR22
NL813-N .....	LR8	NL-AE .....	LR22
NL814-A .....	LR9	NL-CE .....	LR22
NL815-C .....	LR9	NL-HE .....	LR22
NL816-H .....	LR9	NL-JE .....	LR22
NL817-H .....	LR10	NL-KE .....	LR22
NL818-A .....	LR10	NL-LE .....	LR22
NL819-C .....	LR11	NL-ME .....	LR22
NL820-H .....	LR11	NL-NE .....	LR22
NL821-K .....	LR11	NL-PE .....	LR22
NL822-C .....	LR12	NL-QE .....	LR22
NL823-H .....	LR12	NL-SE .....	LR22
NL824-H .....	LR13	NL Roses Dimensions .....	LR23-24
NL825-S .....	LR13	5 Series Rose & Cylinder Escutcheon for Set ....	LR25
NL826-A .....	LR13	5 Series Bracket .....	LR26
NL827-A .....	LR14	5 Series Dimensions .....	LR27
NL828-A .....	LR14	5-A .....	LR26
NL829-A .....	LR15	5-AE .....	LR26
NL830-M .....	LR15	5-H .....	LR26
NL831-H .....	LR15	5-HE .....	LR26
NL832-C .....	LR16	How to Order .....	LR28
NL833-C .....	LR16	Installation Instructions .....	LR29-31
NL834-A .....	LR16	Information .....	LR32-33
NL Series Dimensions .....	LR17-20	Fix Back Plate.....	LR34
NL Roses .....	LR21	AT Series.....	LR34
NL-A .....	LR21	Finishes.....	LR35-37



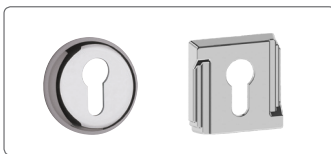
NL Series

LR4-20



Roses

LR21 & LR 23



Escutcheons

LR22



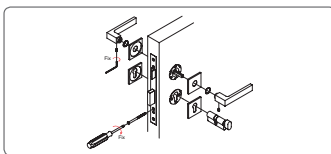
5 Series

LR25-27

Lever Set	Latch	Cylinder	Finish	Door Thickness (D/T)
NL802-5H-SHE	4650-60	46225-D	F21	50
			Bright Chrome	50mm

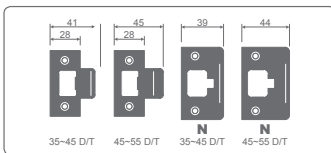
How to Order

LR28



Installation Instructions

LR29-31



Information

LR32-33



Fixing Back Plate, AT Series

LR34



inishes

LR35-37

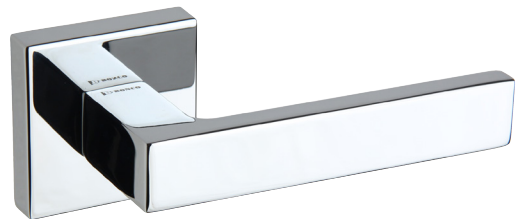
## NL SERIES

**Standard Finishes:**  
F21, F22, F91~F102,  
F91T~F108T,  
PVD (by request)

### NL802-H

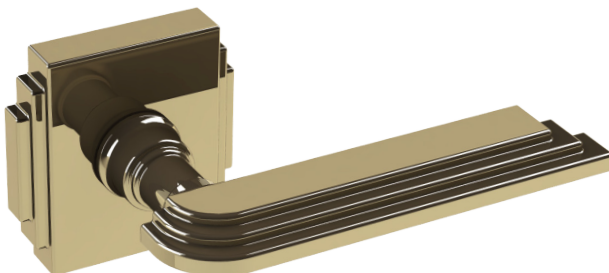


F97

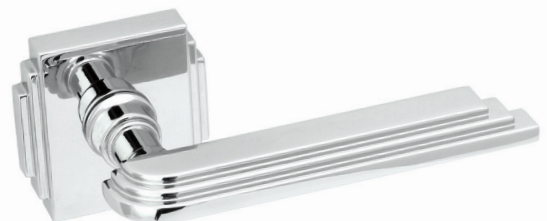


F21

### NL803-L

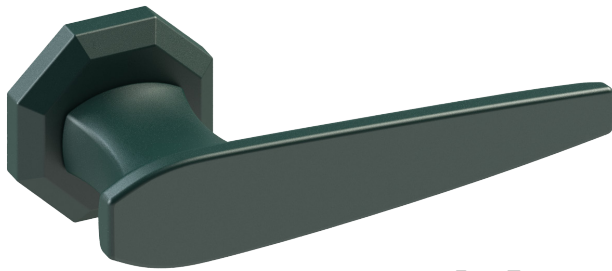


F16



F21

**NL804-K**



**F105T**

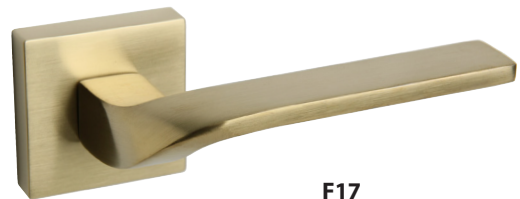


**F22**

**NL805-H**



**F91**



**F17**

**NL806-C**



**F93**



**F302**

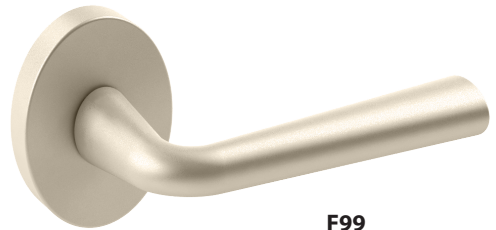
## NL SERIES

**Standard Finishes:**  
F21, F22, F91~F102,  
F91T~F108T,  
PVD (by request)

**NL807-P**



**F97**

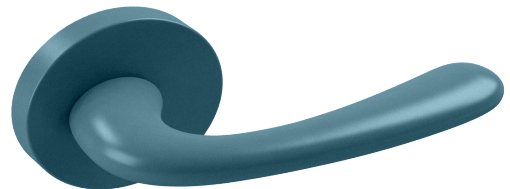


**F99**

**NL808-M**



**F21**

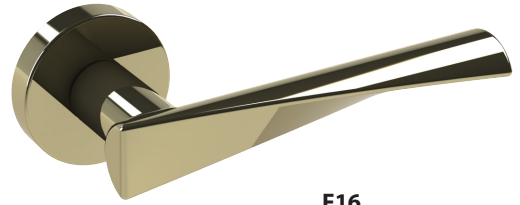


**F106T**

**NL809-A**



**F97**

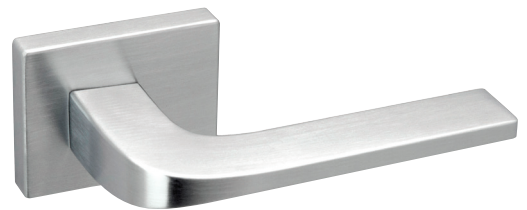


**F16**

**NL810-N**

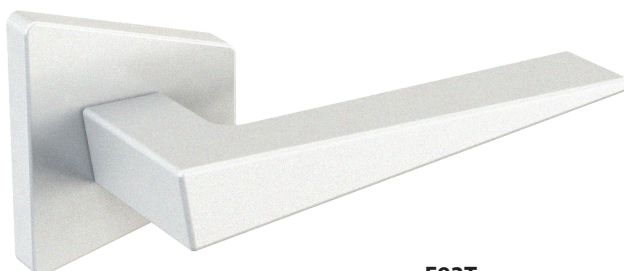


**F306**



**F22**

**NL811-Q**



**F93T**



**F21**

## NL SERIES

**Standard Finishes:**  
F21, F22, F91~F102,  
F91T~F108T,  
PVD (by request)

### NL812-M



F96T

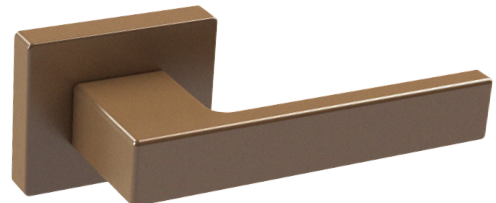


F311

### NL813-N



F21



F102



**NL814-A**



**F94T**



**F99**

**NL815-C**

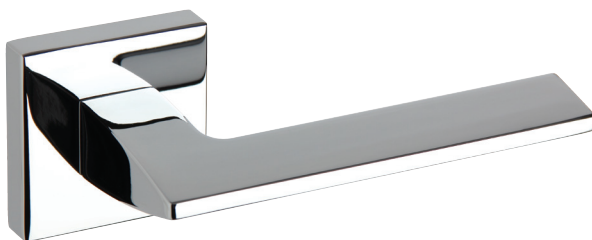


**F91**

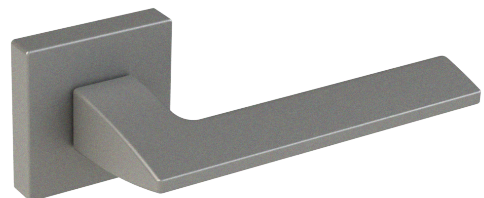


**F301**

**NL816-H**



**F21**



**F96T**

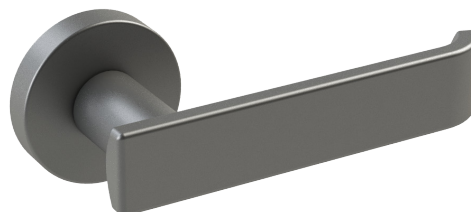
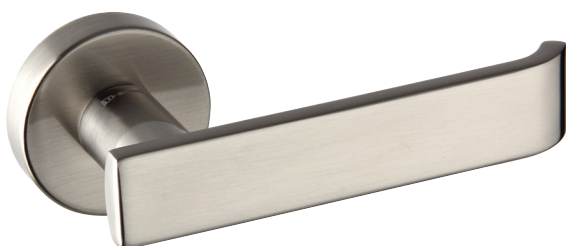
## NL SERIES

**Standard Finishes:**  
F21, F22, F91~F102,  
F91T~F108T,  
PVD (by request)

### NL817-H



### NL818-A



**NL819-C**



**F91**

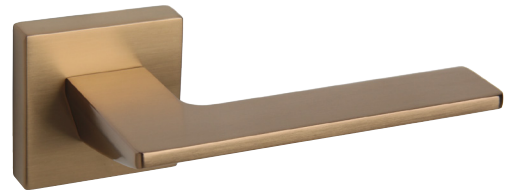


**F107T**

**NL820-H**



**F22**



**F302**

**NL821-K**



**F100**



**F304**

## NL SERIES

**Standard Finishes:**  
F21, F22, F91~F102,  
F91T~F108T,  
PVD (by request)

### NL822-C



F304



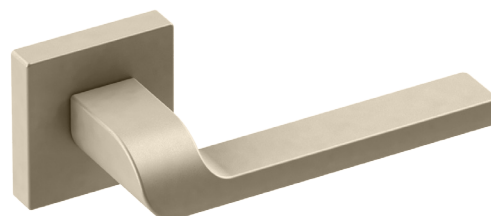
F104T

### NL823-H



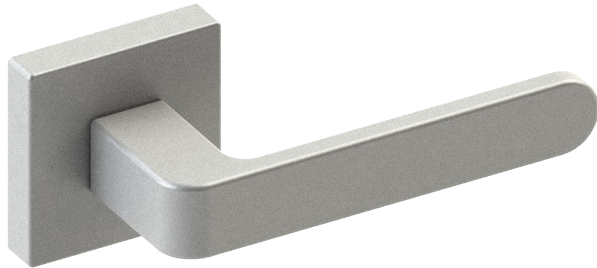
Matt Light Grey powder coating

C02

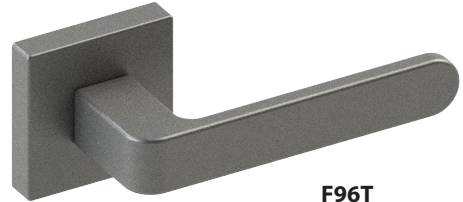


F101

**NL824-H**



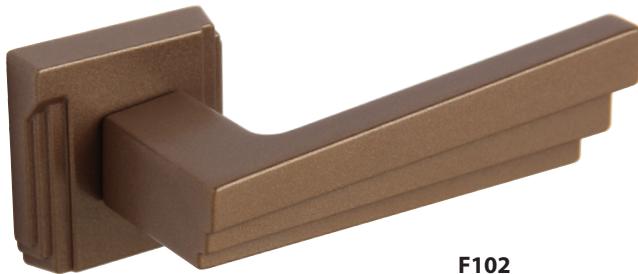
**F94T**



**F96T**

**NL825-S**

This design for powder coating only



**F102**

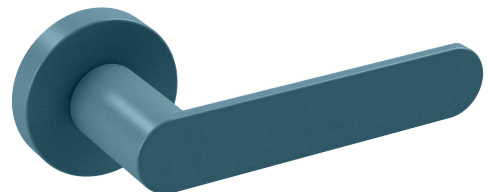


**F97**

**NL826-A**



**F100**



**F106T**

## NL SERIES

**Standard Finishes:**  
F21, F22, F91~F102,  
F91T~F108T,  
PVD (by request)

### NL827-A

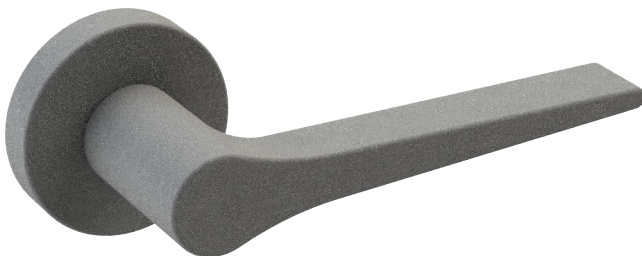


F91T



F21

### NL828-A



F96T

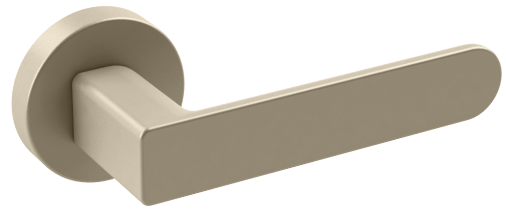


F108T

**NL829-A**



**F91**

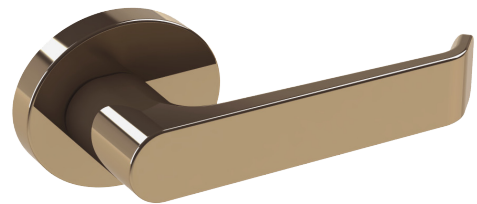


**F101**

**NL830-M**

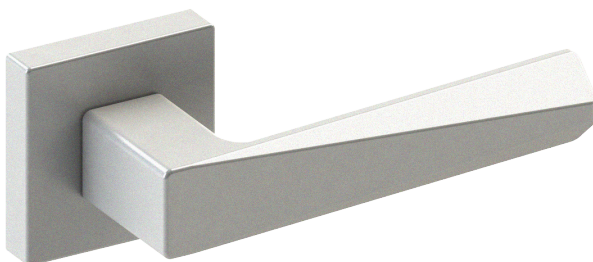


**F97**

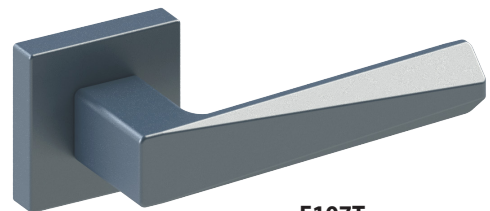


**F304**

**NL831-H**

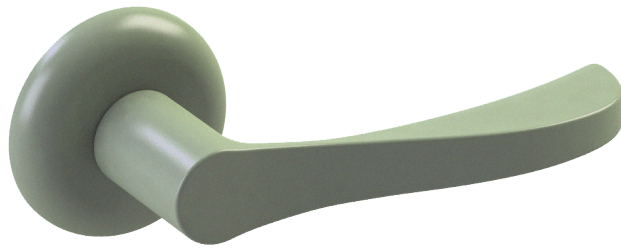


**F94T**



**F107T**

NL832-C



F104T



F102

NL833-C **NEW**

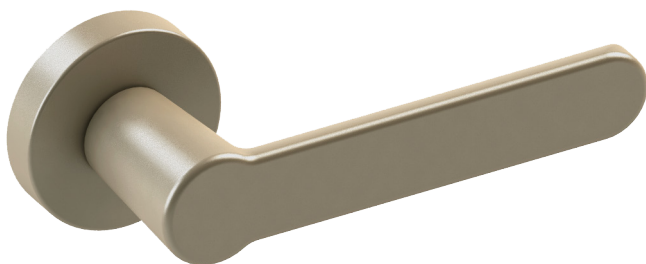


F16

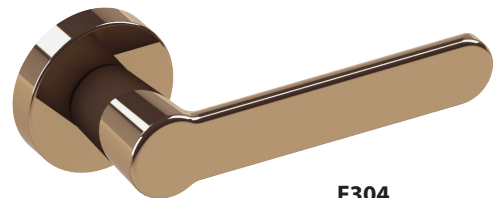


F91

NL834-A **NEW**



F101

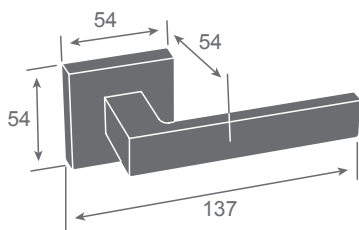


F304

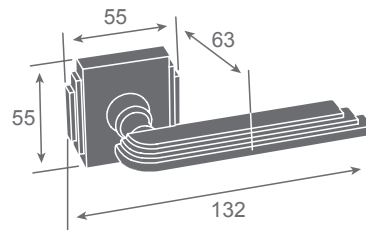


# NL SERIES

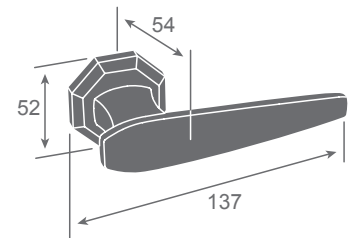
Dimensions  
in millimeters



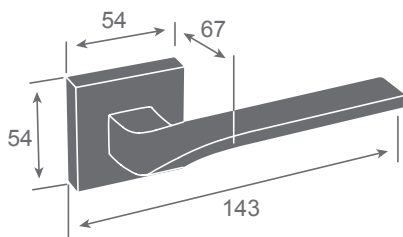
**NL802-H**



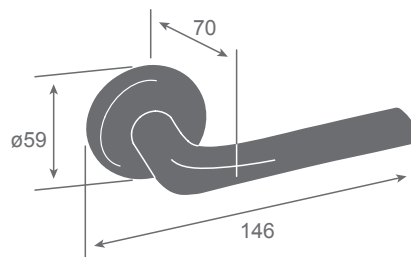
**NL803-L**



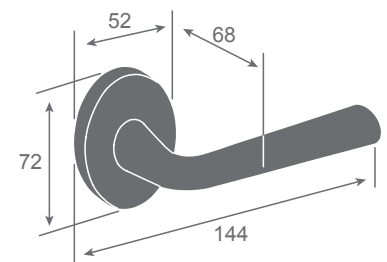
**NL804-K**



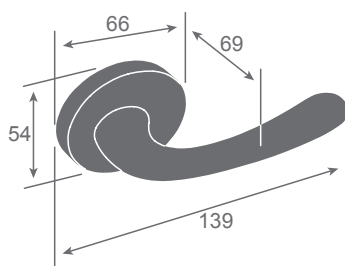
**NL805-H**



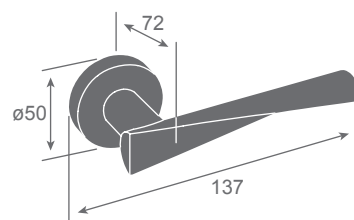
**NL806-C**



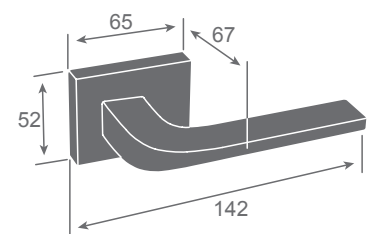
**NL807-P**



**NL808-M**



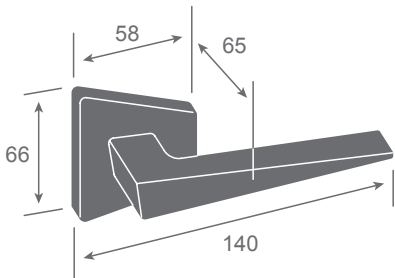
**NL809-A**



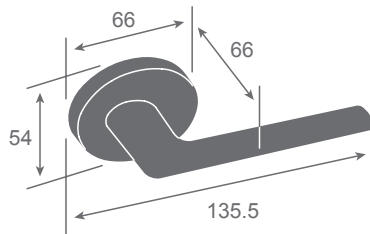
**NL810-N**

# NL SERIES

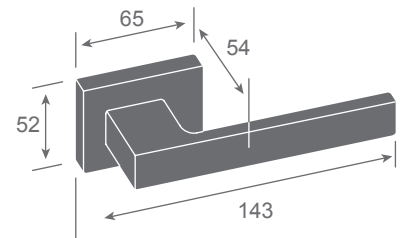
Dimensions  
in millimeters



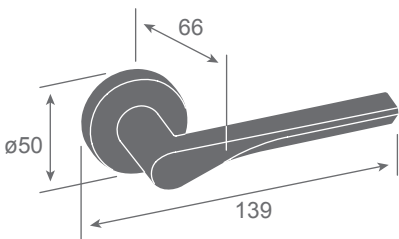
**NL811-Q**



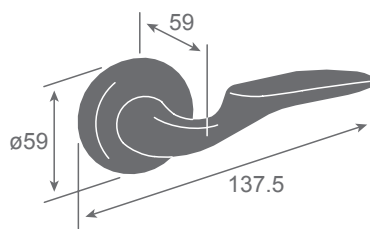
**NL812-M**



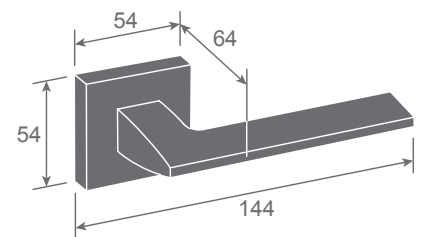
**NL813-N**



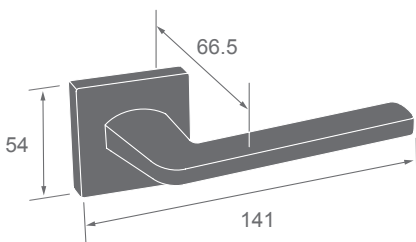
**NL814-A**



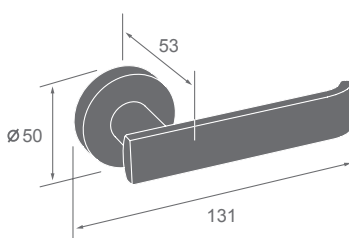
**NL815-C**



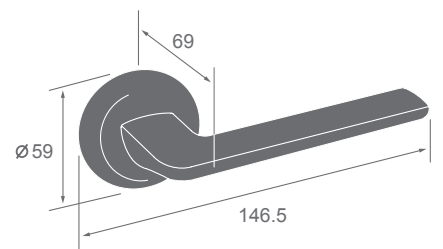
**NL816-H**



**NL817-H**



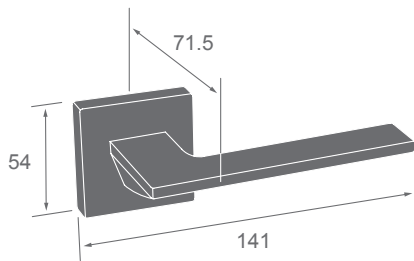
**NL818-A**



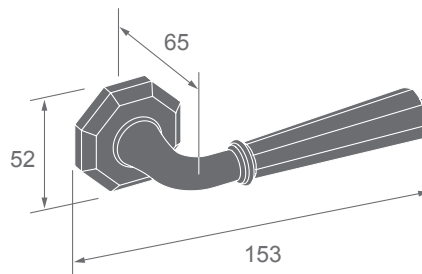
**NL819-C**

# NL SERIES

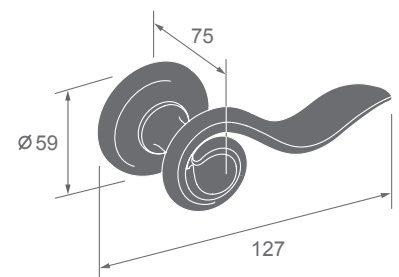
Dimensions  
in millimeters



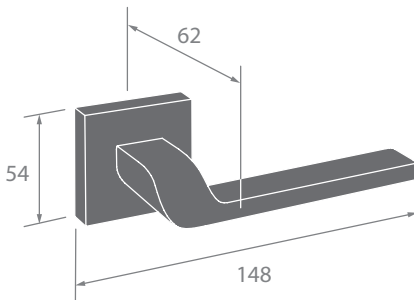
**NL820-H**



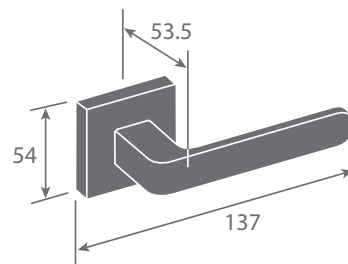
**NL821-K**



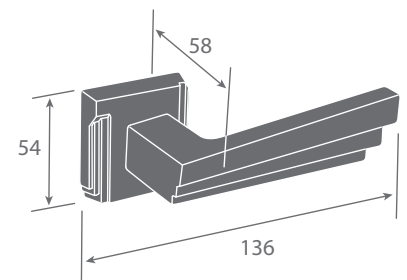
**NL822-C**



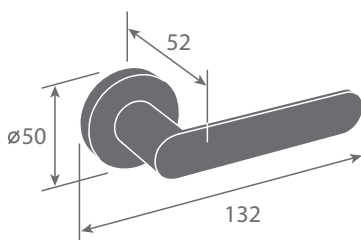
**NL823-H**



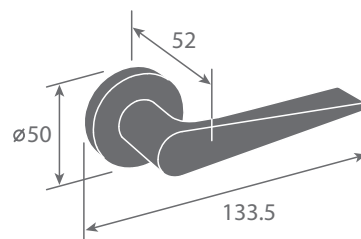
**NL824-H**



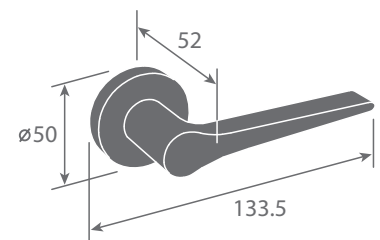
**NL825-S**



**NL826-A**



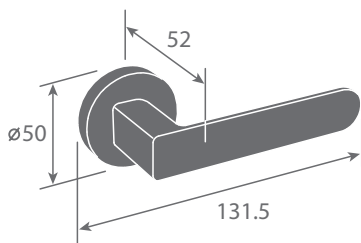
**NL827-A**



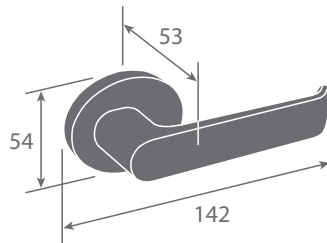
**NL828-A**

# NL SERIES

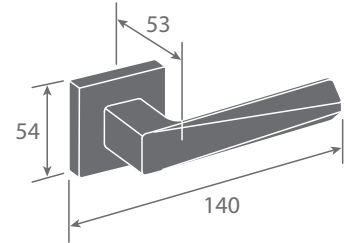
Dimensions  
in millimeters



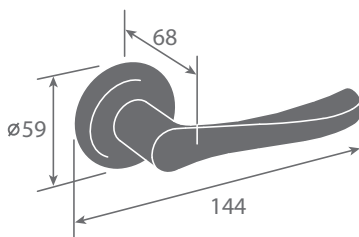
**NL829-A**



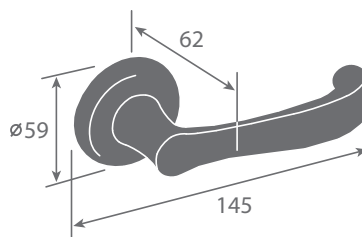
**NL830-M**



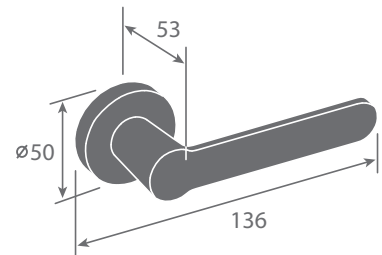
**NL831-H**



**NL832-C**



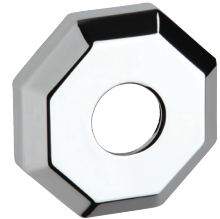
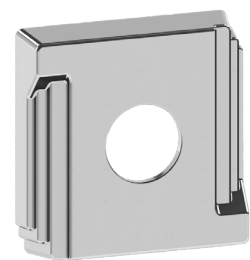
**NL833-C** **NEW**



**NL834-A** **NEW**

## NL ROSES

The trim design to be chosen from Rose design A - S

**A****C****H****J****K****L****M****N****P****Q****S**

## NL ESCUTCHEONS

### Cylinder Escutcheon

The trim design to be chosen from Rose design  
AE - SE

**AE**



**CE**



**HE**



**JE**



**KE**



**LE**



**ME**



**NE**



**PE**



**QE**

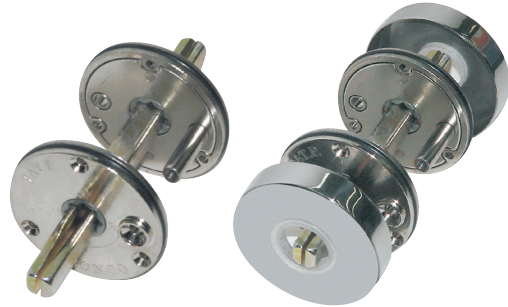


**SE**

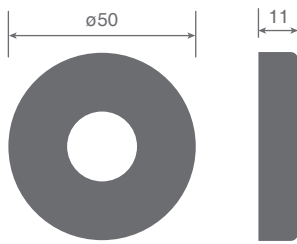


# NL ROSES

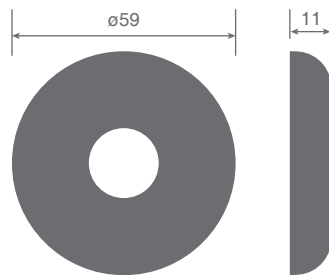
Dimensions  
in millimeters



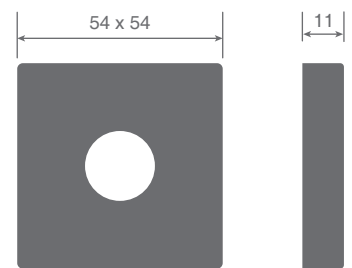
Cassette Component



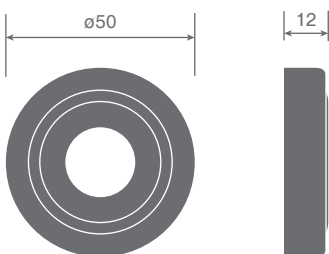
A



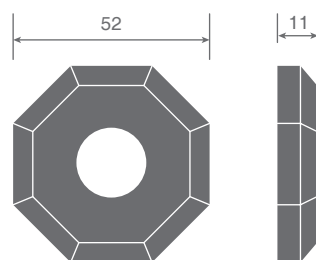
C



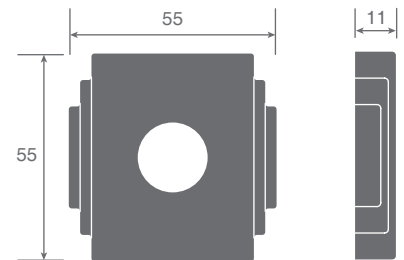
H



J



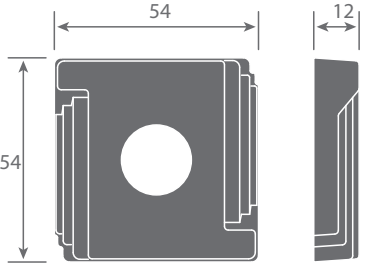
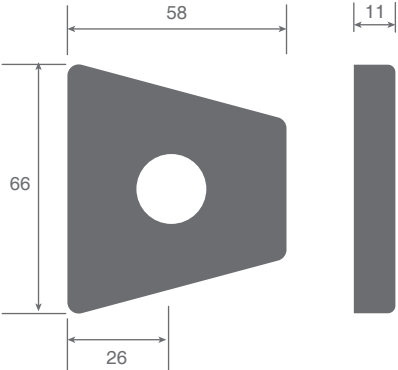
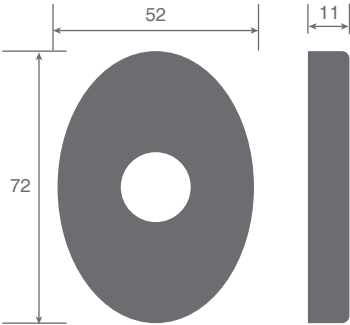
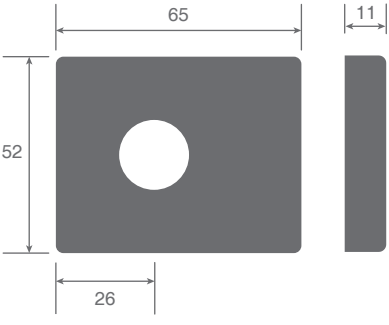
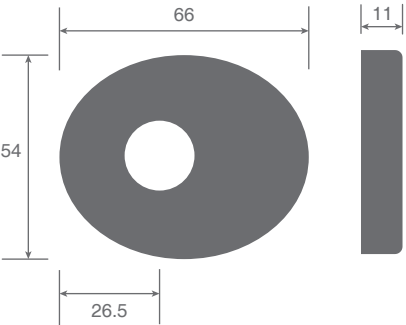
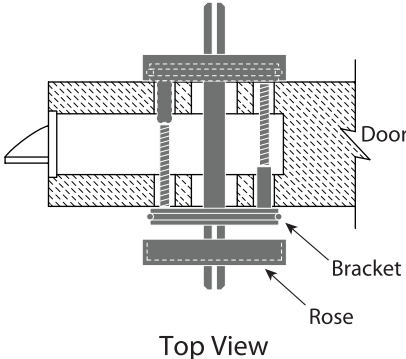
K



L

# NL ROSES

Dimensions in millimeters





# 5 SERIES

Rose &  
Cylinder Escutcheon



Outside



Inside



Outside



Inside

## 5 SERIES

Rose &  
Cylinder Escutcheon

Rose design A & H

### Bracket



Rose Bracket



Cylinder Escutcheon Bracket

### 5-A

Rose Cover



### 5-AE

Cylinder Escutcheon Cover



### 5-H

Rose Cover



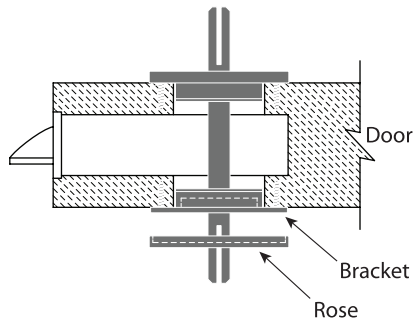
### 5-HE

Cylinder Escutcheon Cover

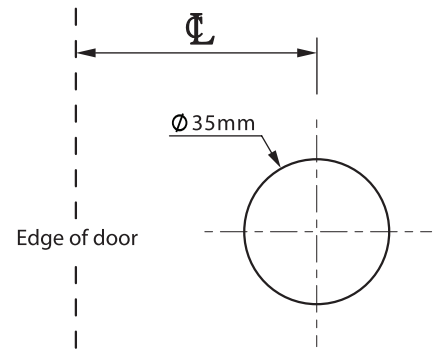


# 5 SERIES

Dimensions  
in millimeters

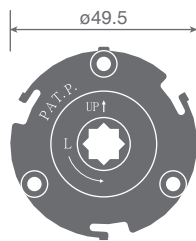
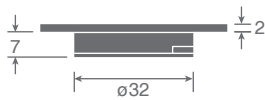


Top View

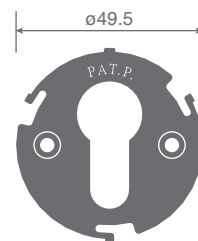


Template for 5 Series Bracket

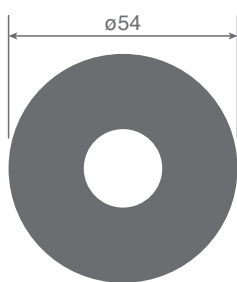
## Bracket



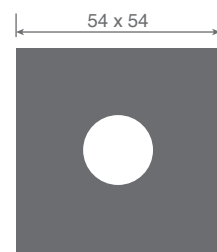
Rose



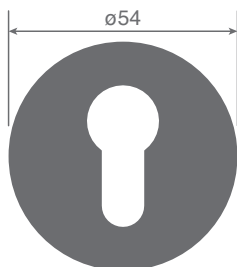
Cylinder Escutcheon



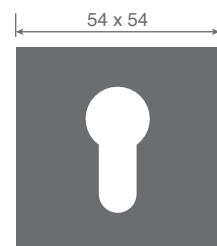
5-A



5-H



5-AE



5-HE

## How to Order

### EXAMPLE 1 : NL802-5H-5HE-4650-60-4622S-D-F21-50DT

	Lever Set	Lock	Cylinder	Finish	Door Thickness (D/T)
	<b>NL802-5H-5HE</b>	<b>4650-60</b>	<b>4622S-D</b>	<b>F21</b>	<b>50</b>
				Bright Chrome	50mm

### EXAMPLE 2 : NL808-M-5091R-60-F21-45DT

	Lever Set	Latch	Backset	Finish	Door Thickness (D/T)
	<b>NL808-M</b>	<b>5091R</b>	<b>60</b>	<b>F21</b>	<b>45</b>
			60mm	Bright Chrome	45mm

### EXAMPLE 3 : NL807-P-CLQ-05-F22-50DT

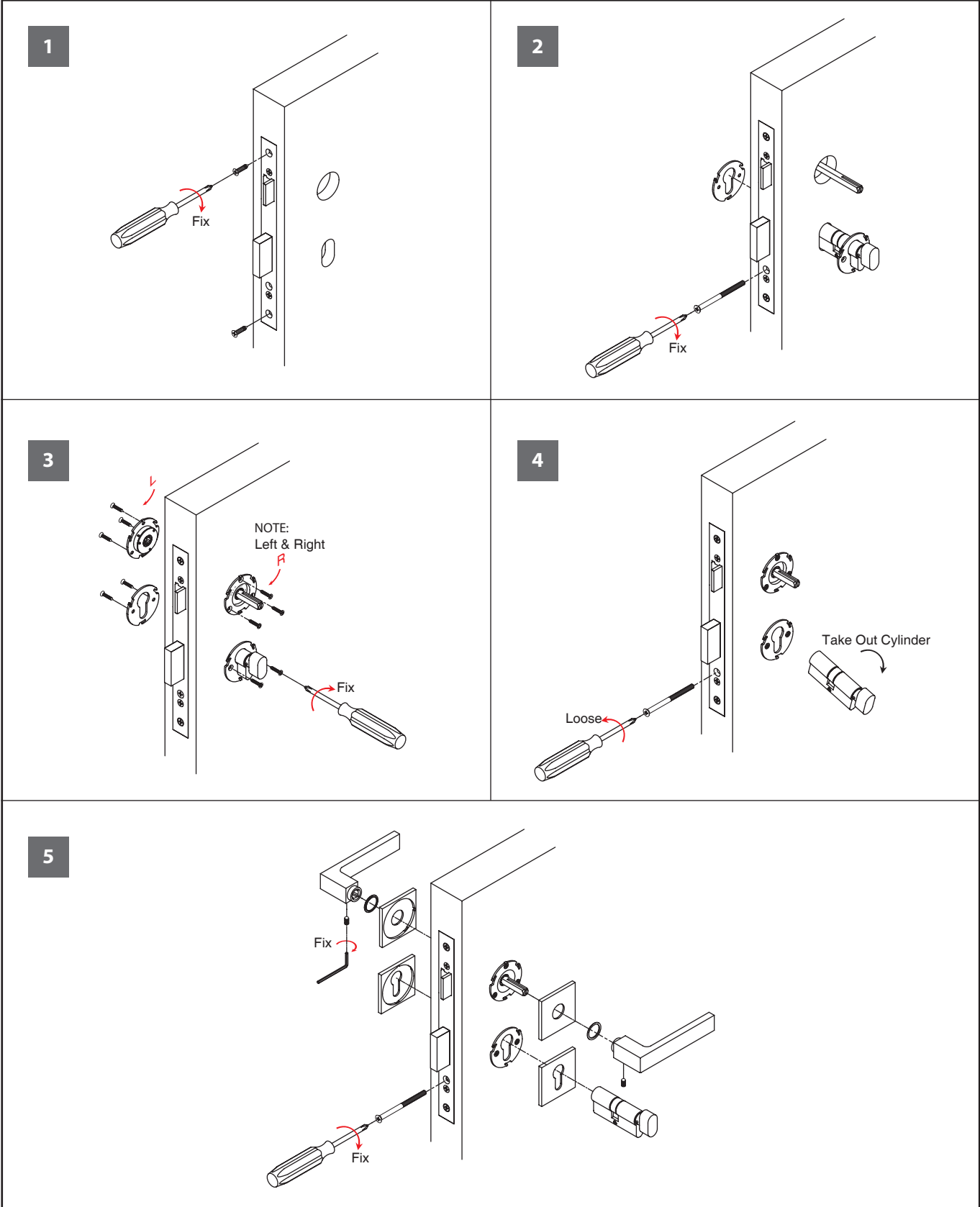
	Lever Set	Lock	Function Number	Finish	Door Thickness (D/T)
	<b>NL807-P</b>	<b>CLQ</b>	<b>05</b>	<b>F22</b>	<b>50</b>
			Entrance	Satin Nickel	50mm

### EXAMPLE 4 : NL805-H-HE-4626-70-4622S-A-F21-55DT

	Lever Set	Lock	Cylinder	Finish	Door Thickness (D/T)
	<b>NL805-H-HE</b>	<b>4626-70</b>	<b>4622S-A</b>	<b>F21</b>	<b>55</b>
				Bright Chrome	55mm

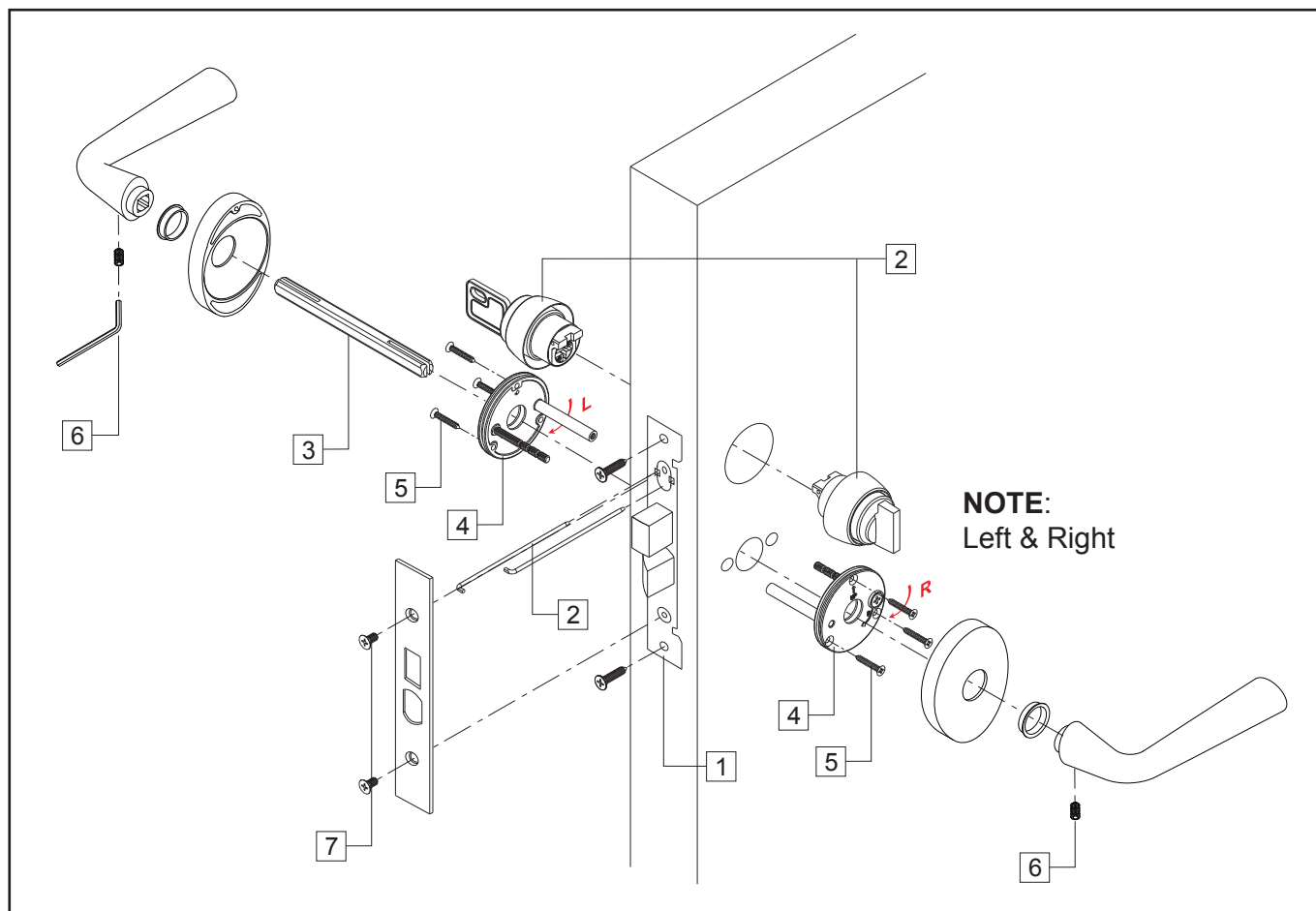
# Installation Instruction

For Example 1



## Installation Instruction

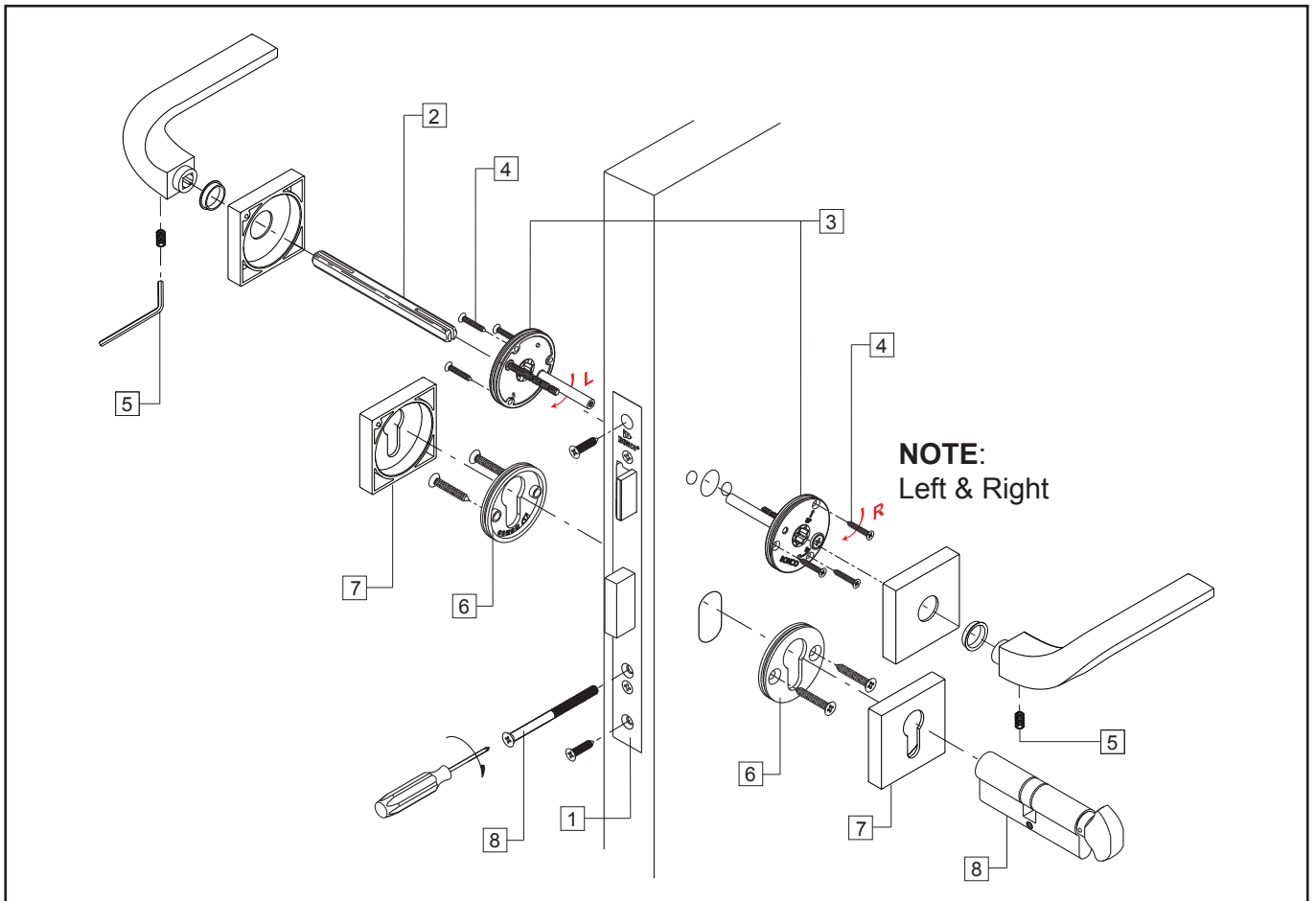
For Example 3



1. Install the lockcase by inserting it into the cutout of the door.
2. Secure the outside cylinder and inside turn-piece to the lockcase by inserting the long retainer pins from the plate side.
3. Insert the square spindle into the hub.
4. Place the fixing brackets onto the door and fix them by tightening up two sets of (male and female screws) as shown in the diagram.
5. Reinforce and secure the fixing brackets by additional screws.
6. Secure the outside and inside lever to the fixing brackets. Tighten the levers to the square spindle with the little thread screw.
7. Finally, install the armored front.

# Installation Instruction

For Example 4



1. Install the lockcase by inserting it into the cutout of the door.
2. Insert the square spindle into the hub.
3. Place the fixing brackets onto the door and fix them by tightening up two sets of screws.
4. Reinforce and secure the fixing brackets by additional screws.
5. Secure the outside and inside lever to the fixing brackets. Tighten the levers to the square spindle with the little thread screw.
6. Place the fixing brackets onto the door and fix them by tightening up four screws.
7. Insert the cylinder through the cylinder escutcheons.
8. Finally, install the armored front.

## Information


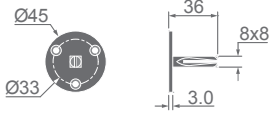

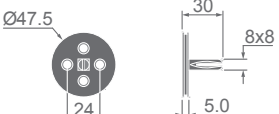

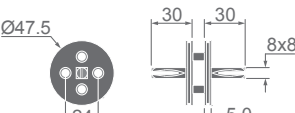
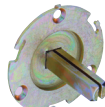
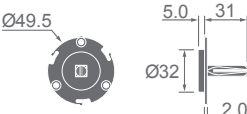
The series below are recommended to use with **BONCO** lever handles and roses.

Series	Backset	Door Thickness	Strike Plate	Photo	Spindle
<p><b>5091SS or 5091SSN</b></p> <p><b>Spring Latch</b></p>	60&70 mm	35~55mm	<p>35~45 D/T    45~55 D/T    35~45 D/T    45~55 D/T</p>	<p><b>Latch:</b> Stainless Steel, Reversible <b>Face &amp; Strike Plate:</b> Stainless Steel</p>	AA
<p><b>5091E or 5091EN</b></p> <p><b>Spring Latch</b></p>	60&70 mm	35~55mm	<p>35~45 D/T    45~55 D/T    35~45 D/T    45~55 D/T</p>	<p><b>Latch:</b> Zinc Alloy, Reversible <b>Face &amp; Strike Plate:</b> Stainless Steel</p>	AA
<p><b>5091R or 5091RN</b></p> <p><b>Spring Latch with Spring Hub</b></p>	60&70mm	35~55mm	<p>35~45 D/T    45~55 D/T    35~45 D/T    45~55 D/T</p>	<p><b>Latch:</b> Stainless Steel, Reversible <b>Face &amp; Strike Plate:</b> Stainless Steel</p>	AA
<p><b>LL Series</b></p>	50mm	40~50mm			AA


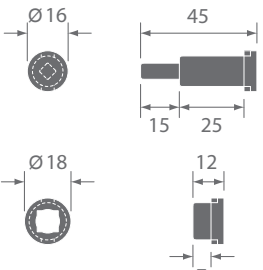
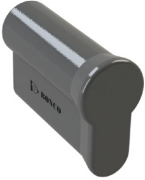
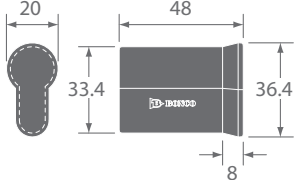


Series	Backset	Door Thickness	Strike Plate	Photo	Spindle
<b>CL Series</b>	50mm	45~55 mm			AA
<b>CLQ Series</b>	70 mm	45~55 mm			AA
<b>4626 Series</b>	60&70mm	35~55mm			AA
<b>4650 Series</b>	60&70mm	35~55mm			AA
<b>4653 Series</b>	60&70mm	35~55mm			AL/AR



## Fixing Back Plate

Model	Photo	Dimension in mm	Used for
4681-BP			For 4900 Series Dummy Fixing
SBG-BP			For SB, HS & NL Series Levers Handle Dummy Fixing
SBG-BPD			For SBG, HSG & NLG Series Levers Handle Dummy Fixing
5-BP			For 5 Series Covers Dummy Fixing (door thickness must be over 38mm)











## Aid Tool - AT Series

Model	Photo	Dimensions in mm	Used for
AT-01			For 49000 Series: 49901, 49903 & 49905
AT-02			For Cylinder Escutcheon: SB, HS & 5 Series Covers



## Electroplate Finishes List

BONCO	Description	BONCO	Description
	<b>F21</b> Bright chrome		<b>F22</b> Satin nickel

## BPC Finishes List

BONCO	Description	BONCO	Description
	<b>F91</b> Matt black powder coating		<b>F91T</b> Matt black powder coating with rough surface
	<b>F93</b> Matt white powder coating		<b>F93T</b> Matt white powder coating with rough surface
	<b>F94T</b> Matt light grey powder coating with rough surface		<b>F96T</b> Matt dark grey powder coating with rough surface
	<b>F97</b> Matt brown powder coating		<b>F97T</b> Matt brown powder coating with rough surface
	<b>F99</b> Matt champagne silver powder coating		<b>F100</b> Matt silver grey powder coating

<b>BONCO</b>	<b>Description</b>	<b>BONCO</b>	<b>Description</b>
	<b>F100T</b> Matt silver grey powder coating with rough surface		<b>F101</b> Matt champagne gold powder coating
	<b>F102</b> Matt antique brass gold powder coating		<b>F102T</b> Matt antique brass gold powder coating with rough surface
	<b>F104T</b> Matt light green powder coating with rough surface		<b>F105T</b> Matt dark green powder coating with rough surface
	<b>F106T</b> Matt light blue powder coating with rough surface		<b>F107T</b> Matt dark blue powder coating with rough surface
	<b>F108T</b> Matt rose gold powder coating with rough surface		

 + 	<b>C02</b> Matt light / dark grey powder coating with rough surface
---	--

## PVD Finishes List

<b>BONCO</b>	Description	<b>BONCO</b>	Description
	<b>F16</b> Polished brass		<b>F17</b> Brushed brass
	<b>F301</b> Polished bronze		<b>F302</b> Brushed bronze
	<b>F303</b> Brushed chrome		<b>F304</b> Red gold
	<b>F305</b> Brushed red gold		<b>F306</b> Polished black chrome
	<b>F307</b> Brushed black chrome		<b>F308</b> Steel optic
	<b>F310</b> Polished nickel		<b>F311</b> Gold optic
	<b>F316</b> Brushed nickel		



Name of quality & dependability

[www.boncohardware.com](http://www.boncohardware.com)

**BONCO** Ironmongery Ltd.  
Member of E. Bon Holdings Ltd. (HKEx stock code 599)

---

18/F, First Commercial Building, 33 Leighton Rd., Causeway Bay, H.K.  
Tel : (852) 2891 2188 Fax : (852) 2834 2652

